



Nephrin Polyclonal Antibody

Catalog No	YP-Ab-17057
Isotype	IgG
Reactivity	Human;Mouse;Rat
Applications	WB;IHC;IF;ELISA
Gene Name	NPHS1
Protein Name	Nephrin
Immunogen	The antiserum was produced against synthesized peptide derived from human Nephrin. AA range:843-892
Specificity	Nephrin Polyclonal Antibody detects endogenous levels of Nephrin protein.
Formulation	Liquid in PBS containing 50% glycerol, 0.5% BSA and 0.02% sodium azide.
Source	Polyclonal, Rabbit,IgG
Purification	The antibody was affinity-purified from rabbit antiserum by affinity-chromatography using epitope-specific immunogen.
Dilution	IHC: 1/100 - 1/300. ELISA: 1/40000.. IF 1:50-200
Concentration	1 mg/ml
Purity	≥90%
Storage Stability	-20°C/1 year
Synonyms	NPHS1; NPHN; Nephrin; Renal glomerulus-specific cell adhesion receptor
Observed Band	
Cell Pathway	Cell membrane ; Single-pass type I membrane protein . Predominantly located at podocyte slit diaphragm between podocyte foot processes. Also associated with podocyte apical plasma membrane. .
Tissue Specificity	Specifically expressed in podocytes of kidney glomeruli.
Function	developmental stage:In 23-week-old embryo found in epithelial podocytes of the periphery of mature and developing glomeruli.,disease:Defects in NPHS1 are the cause of congenital nephrotic syndrome of the Finnish type (NPHS1 or CNF) [MIM:256300]. CNF is an autosomal recessive disorder characterized by massive proteinuria in utero and nephrosis at birth.,function:Seems to play a role in the development or function of the kidney glomerular filtration barrier. May anchor the podocyte slit diaphragm to the actin cytoskeleton.,PTM:Phosphorylated on tyrosine residues.,similarity:Belongs to the immunoglobulin superfamily.,similarity:Contains 1 fibronectin type-III domain.,similarity:Contains 8 Ig-like C2-type (immunoglobulin-like) domains.,subcellular location:Predominantly located at podocyte slit diaphragm between podocyte foot processes. Also associated with podocyte apical plasma membrane.,s

**Background**

This gene encodes a member of the immunoglobulin family of cell adhesion molecules that functions in the glomerular filtration barrier in the kidney. The gene is primarily expressed in renal tissues, and the protein is a type-1 transmembrane protein found at the slit diaphragm of glomerular podocytes. The slit diaphragm is thought to function as an ultrafilter to exclude albumin and other plasma macromolecules in the formation of urine. Mutations in this gene result in Finnish-type congenital nephrosis 1, characterized by severe proteinuria and loss of the slit diaphragm and foot processes.[provided by RefSeq, Oct 2009],

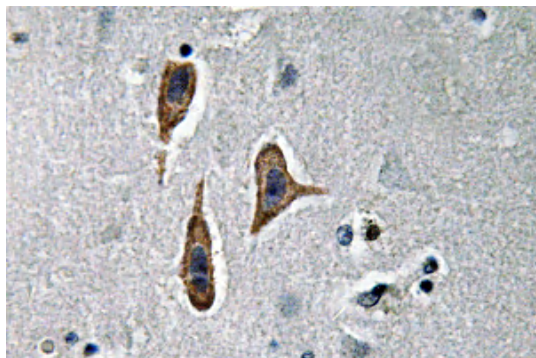
matters needing attention

Avoid repeated freezing and thawing!

Usage suggestions

This product can be used in immunological reaction related experiments. For more information, please consult technical personnel.

Products Images



Immunohistochemistry analysis of Nephtrin antibody in paraffin-embedded human brain tissue.